

MARIA B

#12

Top:Cambric Cotton Print With Heavy Emroidery

Slieve:Printed

Bottam:Semi Loan With Embroidery patch

Dupatta:Siffon Printed



Care Instructions



- Dry clean recommended.
- do not use any type of bleach or stain removing chemicals.
- do not overexpose damp fabric to strong sunlight.
- iron at moderate temperature.

AL-SAFA

MARIA B

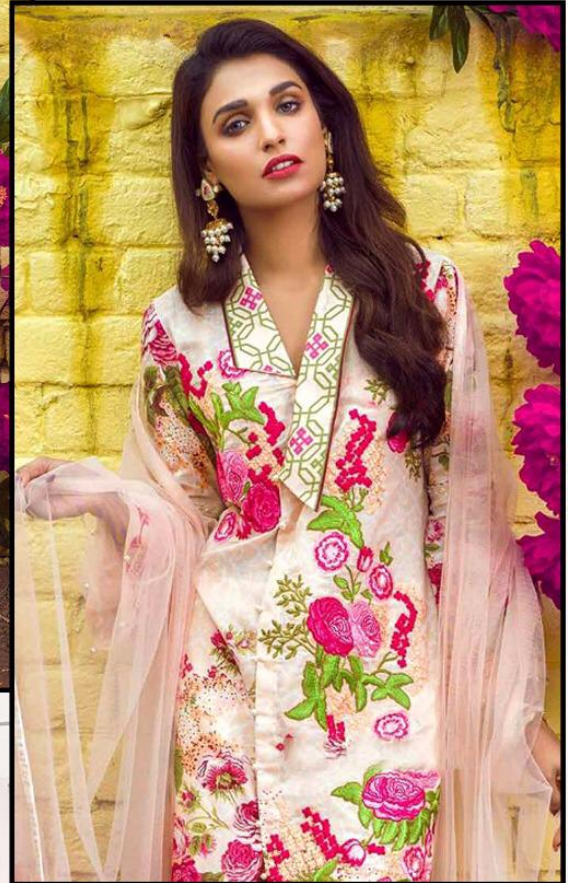
#11

Top: Cambric Cotton Print With Heavy Emroidery patch

Slieve: Printed

Bottam: Semi Loan

Dupatta: Net with Heavy Embroidery



Care Instructions



- Dry clean recommended.
- do not use any type of bleach or stain removing chemicals.
- do not overexpose damp fabric to strong sunlight.
- iron at moderate temperature.

AL-SAFA